

**Educators' Guide to Rainforest Wild ASIA**

# Choose Your Adventure!

**Worksheet for**  
**Primary 3 & 4 students**



**Rainforest Wild**  
**ASIA**





# What's Inside?

**Rainforest Wild ASIA** features a variety of animals found in diverse habitats.

Use this guide and the accompanying worksheets to help your students explore the habitats in **Rainforest Wild ASIA** and learn more about the inhabitants.

The worksheets touch on key topics in the science syllabus, specifically Diversity and Cycles.



Karst



Forest Floor & Canopy



Stream & Watering Hole



Cavern





# About Rainforest Wild ASIA

As Asia's first adventure-based zoological park, **Rainforest Wild ASIA** features 36 species of animals in habitats that simulate the environment where they are found naturally. Choose your adventure, from canopy to cavern and enjoy chance encounters with the animals.

## Explore the 8 thematic zones:

### The Karsts



Karsts are unique landscape shaped by the natural erosion of limestone over time. Southeast Asia is home to extensive tower-shaped karsts, which are replicated at **The Karsts** in Rainforest Wild ASIA.

### The Cavern



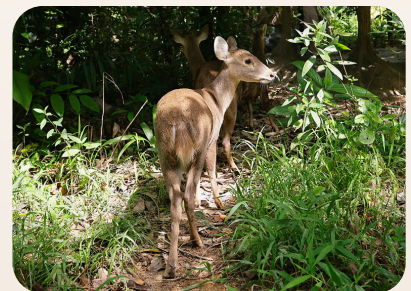
Caverns are caves with underground passages and chambers. **The Cavern** is inspired by Sarawak's Mulu Caves, one of Southeast Asia's largest and most complex cave systems, and a UNESCO World Heritage site.



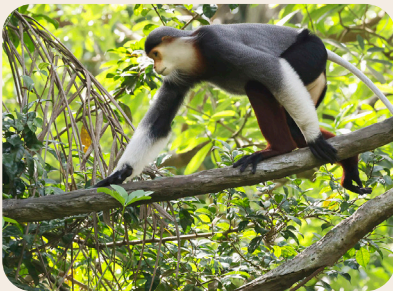
### Entrance Gorge



### The Outpost



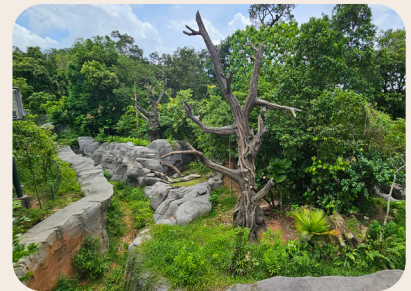
### Forest Floor



### The Canopy



### Rock Cascade



### Watering Hole





# 'Choose Your Wild' Experience

There are various paths you can take to explore **Rainforest Wild ASIA**. We recommend that you attempt the Elevated Walkway and decide on one of the two routes indicated below, based on the time you have.

Rainforest Wild ASIA is open daily from 9.00am – 6.00pm  
(Last entry at 5.00pm)

## Forest Treks

- 1 Log Crossing Trek (100m)
- 2 Karst Loop Trek (200m)
- 3 Forest Floor Trek (120m)
- 4 Root Hollow Trek (160m)
- 5 Predator Trek (70m)
- 6 Upper Stream Trek (120m)
- 7 Lower Stream Trek (280m)

## F&B

- A Rangers Cafe
- B Sentinel Foodhall
- C Watering Hole Cafe
- D Cavern Restaurant

 Elevated Walkway (Universal-access)

 Forest Treks

 Click here for Ranger Talk timings

 Click here to download map



Mandai Wildlife West

## Elevated Walkway Shorter Route

### Directions:

Keep right at the two intersections  
(circled in white)

**Estimated duration:**  
75 mins

### Zones covered

(in order of walking sequence):  
Entrance Gorge → The Karsts →  
The Outpost → Forest Floor →  
Watering Hole → The Cavern

## Elevated Walkway Longer Route

### Directions:

Turn left at the 1<sup>st</sup> intersection  
to continue onto the longer route

**Estimated duration:**  
150 mins

### Zones covered

(in order of walking sequence):  
Entrance Gorge → The Karsts →  
The Outpost → Forest Floor →  
Rock Cascade\* → The Canopy\* →  
Watering Hole → The Cavern

\* These zones are not included in the shorter route



**Rainforest Wild  
ASIA**



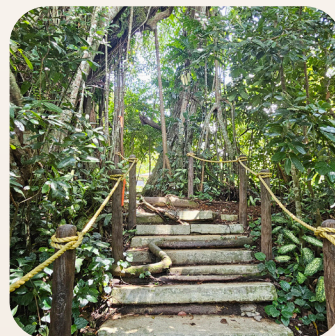
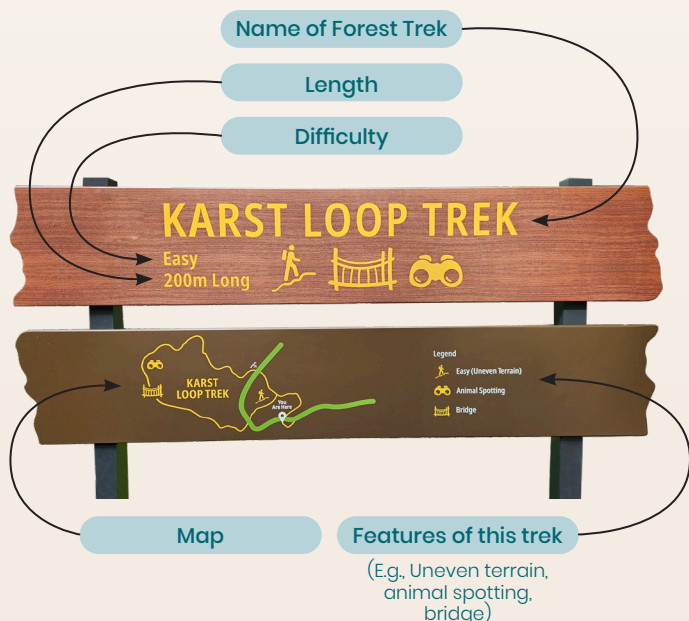
# 'Choose Your Wild' Adventure

You may choose to explore some or all of the **7 Forest Treks** if your students are game for it. Test their motor skills as they navigate boulder crossings, log bridges, and suspended walkways, while discovering tunnels, bubbling springs, and a langur walkthrough habitat.

**Note:** All Forest Treks are connected to the Elevated Walkway, allowing for flexible entry and exit at any time. Please refer to the map on page 4 for the locations of each trek.

Name of Trek	Difficulty	Estimate Length	Features
<b>1 Log Crossing Trek</b>	Moderate	100m	Boulder crossing, Log crossing, Stream
<b>2 Karst Loop Trek</b>	Easy	200m	Uneven terrain, Animal spotting, Bridge
<b>3 Forest Floor Trek</b>	Moderate	120m	Boulder crossing, Log crossing, Animal spotting
<b>4 Root Hollow Trek</b>	Easy	160m	Uneven terrain, Log crossing, Animal spotting
<b>5 Predator Trek</b>	Easy	100m	Uneven terrain, Animal spotting, Bridge
<b>6 Upper Stream Trek</b>	Moderate	120m	Boulder crossing, Bridge, Stream, Animal spotting
<b>7 Lower Stream Trek</b>	Moderate	120m	Boulder crossing, Bridge, Stream, Animal spotting, Log crossing

Look out for signages at the start of each Forest Trek.  
Here's how to interpret the signages :



Traverse uneven paths beneath strangling figs at **Root Hollow Trek**



Navigate a suspended bridge over water at **Karst Loop Trek**





# Worksheet

## An Enriching Learning Journey

Recommended For  
**Primary 3 & 4**



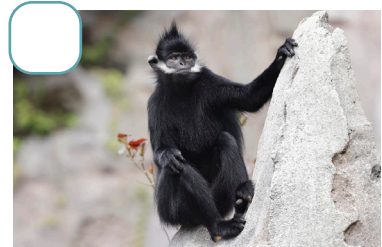
**Rainforest Wild**  
ASIA



# The Karsts

Karsts are unique landscape shaped by the natural erosion of limestone over time. Southeast Asia is home to extensive tower-shaped karsts, which are replicated at **The Karsts** in Rainforest Wild ASIA.

Look out for the Francois langurs at **The Karsts**. They have special hands and feet to climb steep, sharp limestones. You may be lucky enough to catch them leaping across limestones.



Francois Langur

Complete these activities at  **The Karsts**

1

Draw what you see in the habitat.

2

- a. Which animal group would you classify the Francois langur?  
Circle the answer below.

**Amphibians**   **Birds**   **Fish**   **Insects**   **Mammals**   **Reptiles**

- b. List down 3 characteristics of animals classified under this group.

---

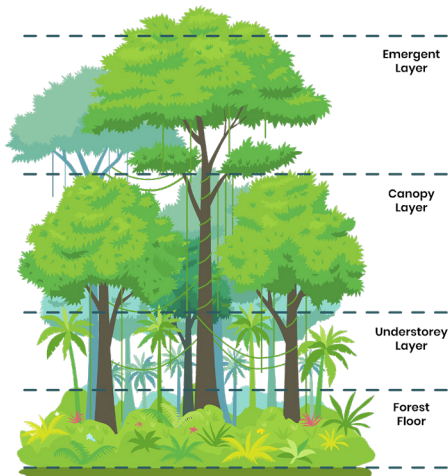
---

---





# Layers of a Rainforest



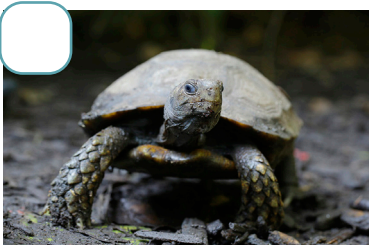
A tropical rainforest is warm and gets lots of rain.

In a rainforest, there are **4 different layers**.

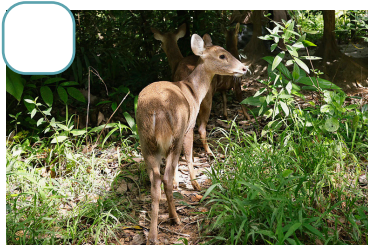
Different animals live in the different layers to avoid competition. However, they may move from one layer to another at times.

Tick the boxes if you spot the animals below while exploring Rainforest Wild ASIA.

Spot these animals at **C Forest Floor** and **D Rock Cascade**



Asian Brown Tortoise

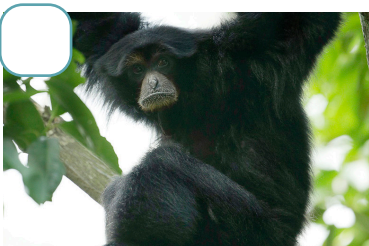


Hog Deer



Malayan Tiger

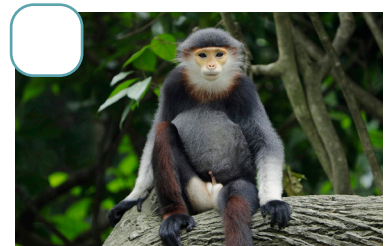
Spot these animals at **E The Canopy**



Siamang



Philippine Spotted Deer



Red-shanked Douc Langur





# Forest Floor

The forest floor is dark and humid.

Large animals like tigers, tapirs, elephants and deer roam but smaller life forms dominate – insects, worms and other invertebrates.

Dead plants and animals are broken down by fungi, bacteria, earthworms, termites and other decomposers, releasing nutrients to nourish the forest.



Complete these activities at  **Forest Floor**

# 3

## Mindfulness Activity: Sensing Nature

Find a comfortable spot for this activity. Now, try to name:

For a more adventurous experience, you may wish to explore the Forest Treks!



### 5 things you can see

How do you classify them?



### 3 things you can smell

Where do the scents or odour come from?



### 2 sounds you can hear

Can you describe the sounds?  
Draw the animals, persons or objects which produce the sounds.



### 4 things you can touch

What materials are the 4 items made of?



### 1 thing you can taste

Name it and describe its taste.





# Rock Cascade

There are more than just trees in rainforests. Large rocks, waterfalls and streams are also present in rainforests.

You can see these features in **Rock Cascade**. They provide shelters or food for the animals.







Complete these activities at  **Rock Cascade**

## 4

### What do living things need to survive?

*Animals need air, water and food to live. To keep our animals healthy and active, the keepers provide them with more than just food, water and shelter. They offer different 'toys' to encourage the animals to exercise or to find food.*

- Can you find the following items in the habitat?  
Draw them in the boxes below.
- Compare what you see to what you have at home.  
What are the similarities and differences? Draw your version.

	Food & Water  	Shelter 	Enrichment/ Toy 
a.			
b.			

- Pick one item from (a) and **explain** why it is important to the animal.



# The Canopy

Canopy layers occupy the second highest rainforest level, formed by a thick layer of leaves. More animals live in the canopy than other layers as there are lots of food there. Animals that live in the canopy can leap, climb or fly well.

Walk through **The Canopy** in Rainforest Wild ASIA for a chance encounter with the animals that live in this habitat.



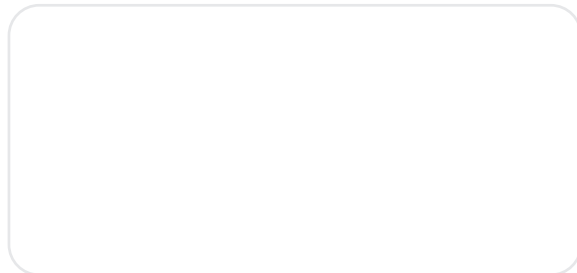
Complete these activities at  **The Canopy**

# 5

## Who Lives Where?

**Hint:** Find the animal signages

- a. Create a drawing of this forest canopy exhibit. Make sure to include and label clearly at least two living and two non-living things in your drawing.



*Animals have special body parts to help them survive well, for example webbed feet and flippers for swimming. These are adaptations.*

- b. Observe the primates as they move across the canopy. What body parts are they using?

---

---

- c. Describe how the body parts in (b) help the animals move around the canopy.

---

---



# Watering Hole

Rivers and streams can be found along the forest floor. Some rainforest animals visit them to drink and feed, while others spend part or all their life in water. Many animals use rivers and streams to escape from predators. Try to spot the animals that might be visiting the **Watering Hole**.



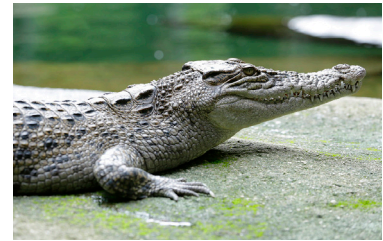
Complete these activities at  **Watering Hole**



Sun Bear



Malayan Tapir



Estuarine Crocodile

## 6

### Whose home is the best?

Observe the habitats of the three animals above carefully to answer the questions below.

- a. Identify one characteristic that defines the habitat of the

Sun Bear: \_\_\_\_\_

Malayan Tapir: \_\_\_\_\_

Estuarine Crocodile: \_\_\_\_\_

- b. Can the crocodile live in the sun bear's exhibit? Why or why not?

**Hint: Think about the characteristics and needs of the animals**

\_\_\_\_\_  
\_\_\_\_\_





# The Cavern

Caverns are caves with underground passages and chambers, featuring distinctive rock formations. Cave racers, equipped with special adaptations to climb walls, often enter caverns to hunt bats and swiftlets. Cockroaches feed on bat poop while scorpions hunt cockroaches and other invertebrates. Explore **The Cavern** to learn more about these animals.



Complete these activities at  **The Cavern**



Cave Racer



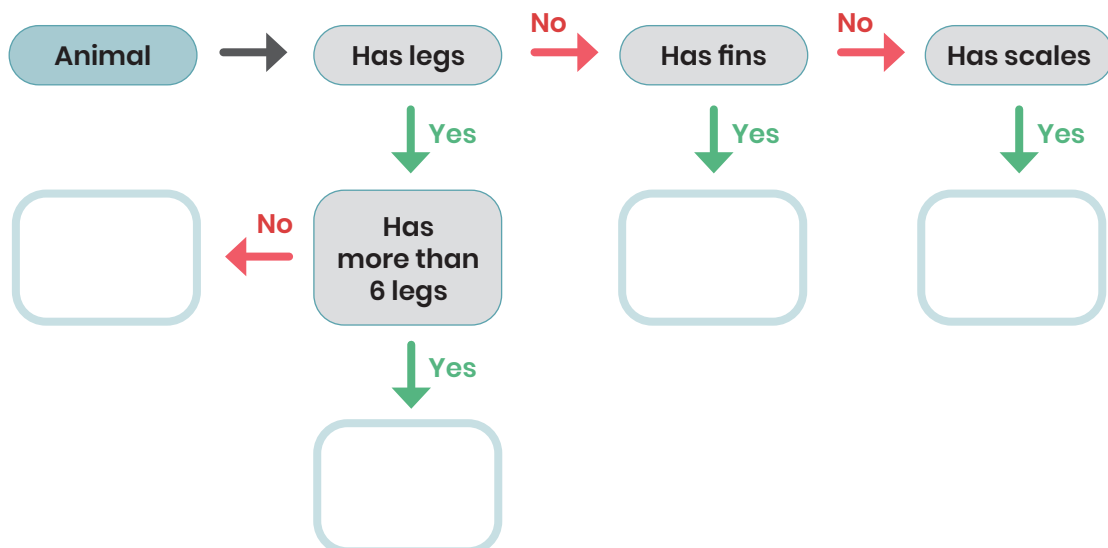
Madagascar Hissing  
Cockroach



Asian Forest Scorpion

7

a. Observe the animals living in The Cavern and fill in the diagram.



b. For each animal listed above, write the animal group it belongs to (e.g. mammals).



# Answer Sheet

## The Karsts [Page 7]


**Q2a:** Mammals


**Q2b Suggested Answers:**

- Hair as body covering
- Most give birth to live young
- Produce milk for young to feed on
- Constant body temperature (endothermic/warm-blooded)


## Forest Floor [Page 9]


**Q3 Suggested Answers:**

 Living vs Non-living things, or any other forms of classification

 Materials of metal railing, foot path, benches, leaves, soil etc

 Smell of rain, soil, food, poop etc

 Words to describe sounds like rustling, booming, whistling. Drawing of leaves and the animals that make those calls

 Imagine the taste of the fruits, nectar, leaves, water etc Sweet, sour, bland, etc

## Rock Cascade [Page 10]

**Q4(a)** Food Dispenser



Shelter



Climbing Rocks



**Q4(c) Suggested Answers:**

- Food & Water - for survival
- Shelter - To hide and rest / a safe space for them to retreat
- Enrichment/Toy - For play and exercise / Keep them active & engaged

## The Canopy [Page 11]

**Q5(a) Suggested Answers:**

- Living things: siamang, Javan langur, red-shanked douc langur, plants
- Non-living things: soil, fake branches, rocks, feeding station

**Q5(b) Suggested Answers:**

Swinging with 2 hands while the feet grip the branches

**Q5(c) Suggested Answers:**

Long limbs to swing and reach branch, long fingers for gripping

## Watering Hole [Page 12]

**Q6(a) Suggested Answers:**

- many plants, tall trees with thick trunks, water body/pond etc

**Q6(b) Suggested Answers:**

- No, the crocodile needs to cool off in the water when it is too hot
- No, the crocodile needs to hunt for food in the water

## The Cavern [Page 13]

**Q7:**

