



- All prices listed are general estimates, inclusive of GST in SGD.
- The quoted price does not represent the final bill.
- The final price may vary based on the specific condition of each plush, the complexity of the repair, or any additional services requested.

Types of services

Minor Procedure

- Suture
- Aesthetic – Dermatology
- Reconstructive surgery
- Transfusion

Major Surgery

- Organ Transplantation
- Clone
- Mechanical

Wellness

- Hydro Therapy
- Bespoke

Stuffing Options

Premium Polyester

- *Bouncy*



Pearly Polyester

- *Soft and light-weight*



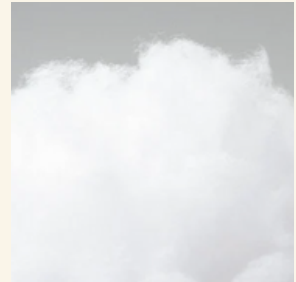
Microfoam beads

- *Squishy and light-weight*



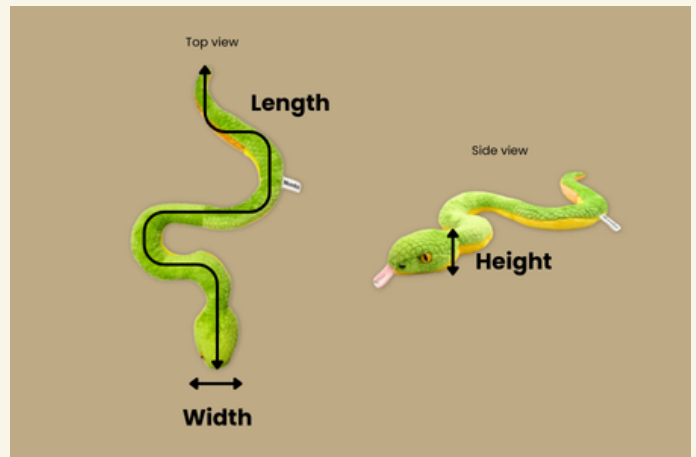
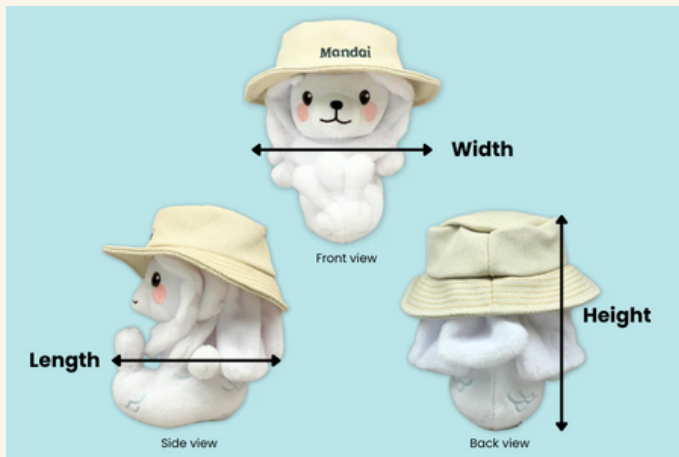
Featherly Polyester

- *Very soft and light-weight*



Calculate Linear Dimensions

Calculate the linear measurement of your plush (Length + Width + Height).



Minor Procedure

Suture	Price
Stitching work (eg. Mending of Tear)	From \$10
Aesthetic - Dermatology	Price
Mold (Grown on plush)	From \$55
Pigmentation (Spots on fabric)	From \$55
Reconstructive Surgery	Price
Sculpting	From \$45
Restitch Mouth / Nose	From \$55
Fabric Nose / Beak / Ear / Hand / Paw / Leg Paw replacement	From \$100
Skin Grafting	From \$55

Minor Procedure

Transfusion

- **Restuffing with premium polyester for the whole plush**

Linear Dimensions in cm (Length + Width + Height)	Price
<i>Refer to page 2 on guide for how to calculate linear dimensions</i>	
≤ 35 cm	\$60
≤ 50 cm	\$70
≤ 65 cm	\$80
≤ 80 cm	\$90
≤ 95 cm	\$100
≤ 110cm	\$110
≤ 125 cm	\$120
≤ 140 cm	\$130
≤ 155 cm	\$140
≤ 170 cm	\$150
≤ 185 cm	\$160
Every 15cm thereafter	Additional of \$10

Restuffing – Existing stuffing will be removed and replaced with new stuffing

Other stuffing materials (eg. featherly polyester, microfoam beads) are available upon request.

Additional charges apply if additional seam opening and closing are needed.

Add-on stuffing	Price
Existing stuffing will remain; only additional stuffing will be added	Quote upon request

Major Surgery

Organ Transplantation (including parts)	Price
Eyes / Nose replacement	From \$80
Ears Support / Joint Replacement (per pair)	From \$125
Memento (Eg. Heart or Voice box)	From \$80
Clone	Price
Replication of a plush	From \$450
Mechanical	Price
Battery compartment, Movement devices, etc.	From \$30

Wellness

Hydro Therapy

- **Surface Cleaning & Spa**

Linear Dimensions in cm (Length + Width + Height)	Surface Cleaning Price	Spa Price
<i>Refer to page 2 on guide for how to calculate linear dimensions</i>		
≤ 35 cm	\$50	\$110
≤ 50 cm	\$55	\$120
≤ 65 cm	\$60	\$130
≤ 80 cm	\$65	\$140
≤ 95 cm	\$70	\$150
≤ 110cm	\$75	\$160
≤ 125 cm	\$80	\$170
≤ 140 cm	\$85	\$180
≤ 155 cm	\$90	\$190
≤ 170 cm	\$95	\$200
≤ 185 cm	\$100	\$210
Every 15cm thereafter	Additional of \$5	Additional of \$10

**Surface cleaning does not include any restuffing.
Spa would include restuffing and bubble bath.*

Bespoke	Price
Accessories customization services (eg. clothes, hats, shoes are available)	Quote upon request